

**Culdee Presbyterian Church**  
916 NC Hwy 73 West End, NC 27376

U.S. Postage Paid  
West End, NC 27376  
Permit No. 6



## **The Culdee Connection**

Thank you, Lord, for:

**January/February 2021**

**Volume: 41**

**Issues: 1 & 2**

**Proofreaders: Eve Williamson & Janie Taylor**

**Compiled by Diann Fortune**

**Welcome to 2021!**

**What an entrance this year has made. What reactions have been felt within each of us.  
Hopefully at least a verse or two from God's Word will resonate.**

**Matthew 6:34** Therefore, do not be anxious about tomorrow, for tomorrow will be anxious for itself. Sufficient for the day is its own trouble.

**Psalms 46:1** God is our refuge and strength, a very present help in trouble.

**Romans 12:2** Do not conform to the pattern of this world, but be transformed by the renewing of your mind. Then you will be able to test and approve what God's will is—his good, pleasing and perfect will.

**James 1:26** Those who consider themselves religious and yet do not keep a tight rein on their tongues deceive themselves, and their religion is worthless.

**Romans 16:17-18** I urge you, brothers and sisters, to watch out for those who cause divisions and put obstacles in your way that are contrary to the teaching you have learned. Keep away from them. **18** For such people are not serving our Lord Christ, but their own appetites. By smooth talk and flattery, they deceive the minds of naive people.

**Proverbs 12:15** The way of fools seems right to them, but the wise listen to advice.

**1 Peter 5:7** Cast all your anxiety on him because he cares for you.

**Luke 6:37** "Do not judge, and you will not be judged. Do not condemn, and you will not be condemned. Forgive, and you will be forgiven.

**Matthew 7:1-2** "Do not judge, or you too will be judged. 2 For in the same way you judge others, you will be judged, and with the measure you use, it will be measured to you.

**Matthew 7:3-5** "Why do you look at the speck of sawdust in your brother's eye and pay no attention to the plank in your own eye? 4 How can you say to your brother, 'Let me take the speck out of your eye,' when all the time there is a plank in your own eye? 5 You hypocrite, first take the plank out of your own eye, and then you will see clearly to remove the speck from your brother's eye.

**Zechariah 1:3b** 'Return to me,' declares the Lord Almighty, 'and I will return to you,' says the Lord Almighty.

**Luke 6:27-28** But to you who are listening I say: Love your enemies, do good to those who hate you, bless those who curse you, pray for those who mistreat you

**James 1:22** Do not merely listen to the word, and so deceive yourselves. Do what it says.

**Matthew 11:28-29** Come to me, all who labor and are heavy laden, and I will give you rest. Take my yoke upon you, and learn from me, for I am gentle and lowly in heart, and you will find rest for your souls.

**Psalms 23:4** Even though I walk through the valley of the shadow of death, I will fear no evil, for you are with me; your rod and your staff, they comfort me.

**John 14:27** Peace I leave with you; my peace I give to you. Not as the world gives do I give to you. Let not your hearts be troubled, neither let them be afraid.

Dear Lord,

As we move into this new year with all its challenges and opportunities, please help us to renew our faith in You, to turn more towards Your Word and less to the outside world. Help us to forgive what needs forgiving, put past burdens where they belong, and allow each of us to move forward in our Christian life independently and collectively. Thank you for the opportunities in each new day. Please guide our choices.

In Christ's Name, Amen.

\*\*\*\*\*

### **STATED SESSION MEETING: NOTES AND ACTIONS-**



**Colossians 3:17** *And whatever you do, whether in word or deed do it all in the name of the Lord Jesus, giving thanks to God the Father through him.*

Presented by June Stewart, Clerk of Session

### **Notes from Stated Session of December 13.... June Stewart, Clerk**

The following minutes were approved as read.....Stated Session of November 8, 2020 and Called Session of November 22, 2020

- Finance motioned that the 2021 budget be accepted as read; the motion was approved.

- A motion was presented to seek a part-time temporary supply and to allow Pastor Jane to moderate January's session meeting on Monday, January 4 at 6:30 p.m. The motion was approved.
- A motion was made to elect Brandon Blue, Diann Fortune, and Patti Burke to be the search committee for a part-time temporary supply. Motion was approved.

### Notes from the Stated Session of January 4, 2021...June Stewart, Clerk

The following minutes were approved as amended.... Stated Session of December, 2020. The following minutes were approved as read.... Called Session of December 14.

- A motion was approved to table the following items of business until the February Stated Session meeting.....2021 Elder of the Month List, 2021 Ministry Assignment List, Election of Clerk, Election of Vice-Clerk, Election of Church Treasurer, Board of Trustee meeting.
- The 2021 Communion and Special Services schedule was approved and the 2021 Special Offerings Calendar was approved.
- Elders approved sending \$250.00 to the GO FUND page to help with the medical expenses for David MacCallum. David's family roots are in Culdee, and he has been a faithful financial supporter of Culdee Missions/Benevolences for many years. A date for a special love offering will be set at the February Stated Session meeting to give the church family an opportunity to further support David.
- Approval was given to continuing Ben Dunlop's contract until such time as his services are not needed in the area of preparing, editing, and uploading worship service videos.
- Culdee received a \$500.00 grant from the Presbytery to help with technology related expenses incurred in updating and/or replacing services/items related to COVID-19/storm damage.
- Elders decided there would be no in person worship in the sanctuary until further notice. Worship services will be in the parking lot and online videos.

### Culdee Presbyterian's Tentative Special Sundays Calendar

All dates are subject to change based on the situation at the time so  
consider marking your calendars in pencil.



### Communion Calendar 2021



Feb. 14... Transfiguration Sunday	August 8...Communion Sunday
April 1...Maundy Thursday	October 3...World Communion Sunday
May 23...Pentecost Sunday	December 24...Christmas Eve

### Special Services 2021

Feb. 17...Ash Wednesday Service	September 19-22...Homecoming and Revival
April 1...Maundy Thursday Service	November 21...Community Thanksgiving Service
April 4...Easter Sunrise Service	December 24...Christmas Eve Service

### Special Offerings Calendar 2021

January 31...Barnabas Fund

May 16...Doris Moore Scholarship

February 23...Blanket Fund

July 18...Barnabas Fund

April 4...One Great Hour of Sharing

October 24...Barnabas Fund

March/April...Mission Offering

November 28...Barium Springs

May 2...Mothers/Father's Day

December 5...Doris Moore Scholarship



\*\*\*\*\*

### Culdee's PNC News



#### **Members:**

Amber Clayton  
Lonnie McKenzie  
Nancy Howle  
Stephanie Barber, Secretary

Diann Fortune, Chair  
Janie Taylor  
Ryan Bailey

The PNC reconvened its regular meeting schedule Tuesday, January 12, 2021. Culdee starts the new year with a new liaison from the Presbytery's Committee on Ministry. Oscar Pace is a lifelong member of Barbeque Presbyterian Church in Sanford and serves as a Ruling Elder for the Presbytery of Coastal Carolina. The PNC looks forward to working with Mr. Pace and continuing the journey of the pastoral search. Please continue to pray for the PNC and the search for Culdee's next installed pastor.

\*\*\*\*\*

### **Culdee's Thriving**

Culdee wants to thrive and spread God's Word, encourage the Culdee Family, and support the local and global community. It takes all hands, hearts and minds to make this happen and there is a place for everyone to make a difference.

Over the next few months, the currently approved duties and responsibilities of one or two ministries will be published in the newsletter. Please take some time to seriously ponder the information. The pandemic is giving the opportunity to do things in new ways. What are some new ways Culdee folks can complete, renew, revive or create ministry service? How can Culdee ensure no one is overlooked in the execution of ministry to the church family?



Everyone has friends attending different churches. Please reach out and find how they are meeting needs. What are their ministries doing? Maybe Culdee would want to borrow their ideas or even partner on something. Share what you find with several elders, not just one 😊 and/or email them to [culdee.news@gmail.com](mailto:culdee.news@gmail.com) .

For instance, it was discovered that a church had a Casserole Committee as part of their Congregational Care Ministry. A few casseroles were kept frozen at all times and whenever a church family reported illness, that family received a casserole from the church. Each family in need received one. Culdee has some wonderful cooks and this might be a great way to serve God through serving those in need.

The Session needs help brainstorming ideas for consideration. It is the hope that everyone in the Culdee family will find a way to eventually be a part of a ministry or service group and help Culdee thrive and share God's love. \*\*And no, just because a person shares an idea doesn't mean that person will be in charge of its execution! At least not yet, anyway. This is brainstorming time. Think and share and share and share!



**This month's featured ministry is Congregational Care** since the current pandemic has made this area critical. Many thanks go to Eve Williamson and her team of people who have already been serving and checking on the church family, especially through these many pandemic months. Fresh ideas and additional hands would be appreciated. Please share any ideas, updates or clarifications to the existing duties with Eve and/or at [culdee.news@gmail.com](mailto:culdee.news@gmail.com).

The goal is to make each ministry even more effective in order to live God's way.

\*\*\*\*\*

### **Congregational Care Duties & Responsibilities**

Elders leading the ministry on Congregational Care have a two-fold assignment. They oversee a number of events which require eating so those provisions must be attended to. Also, the entire flock has varying needs to consider. The Culdee family is composed of folks from a few months old to past ninety. We get to plan and enjoy activities for all ages. We recognize more can be done to expand current offerings.

(A number of church members assist here.)

#### **RESPONSIBILITIES OF THE CONGREGATIONAL CARE COMMITTEE**

##### **A. Kitchen**

- a. Check regularly on supplies
- b. Order paper goods

##### **B. Funerals**

- a. Provide food as requested by the family
- b. Hosts receptions to receive friends following burial
- c. Arrange and serve the refreshments

##### **C. Graduates**

- a. Recognize high school and college graduates in May or June and present a gift from Culdee.

- D. Doris Moore Scholarship
  - a. Distribute scholarship applications, serve on the committee to review the applications and recognize the scholarship recipients.
- E. Ninetieth Birthday Parties
  - a. Plan with family
  - b. Usually after church
- F. Cards
  - a. Arrange for volunteers to receive packets of cards to send to the bereaved and to shut-ins and those home-bound on their birthdays, holidays, and during times of illness.
- G. Church Directory
  - a. Form a committee to oversee the creation of a new directory as needed
- H. Monthly Newsletter
  - a. Assemble and prepare the newsletter for mailing.

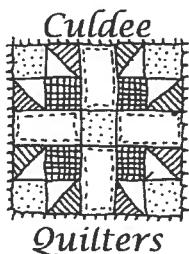
Removed from original responsibilities list for Congregational Care:

- A. Senior Adult Luncheon
  - a. Held in the spring.
  - b. Usually after church
- B. Harvest Festival
  - a. Responsible for securing a couple to handle auction
  - b. Responsible for the kitchen and chicken and dumpling supper
- C. Future Ideas
  - a. Contact any visitors (pew pads) with a card or short visit or phone call of welcome
  - b. An occasional “bingo morning” for seniors

\*\*\*\*\*

### Special Groups Within Culdee’s Family

In addition to the Presbyterian Women, Presbyterian Men’s Club and LEGACY Youth Group, Culdee also offers some special groups that serve God and the community through their talents. These groups welcome new members and are willing to teach the skills necessary. Please consider joining one of these groups for an opportunity for Christian fellowship with service at its heart. Or, if you have an interest or suggestion for another group, please share your ideas with several elders for Session consideration.



**Culdee Quilters**  
Submitted by Judy McKenzie

The main purpose or mission of the Culdee Quilters is to make lap quilts (small quilts) for people that have had surgery, gone to live in nursing homes or for various other health problems. We make a large quilt for the raffle at Culdee’s Fall Harvest Festival each year.



We made and donated 16 fleece blankets for our local EMS to comfort children in crisis and will do so whenever needed. We also made and donated 36 fleece blankets to a new center in Moore County being established to assist homeless people.

Those interested in joining our group will need a basic knowledge of sewing and have access to a sewing machine. We will be glad to instruct you in how to quilt.

We normally meet every Thursday from 9:00 to 2:00 downstairs in the church. Due to Covid-19, Culdee Quilters will be taking a break from meeting for an unknown period of time.

Anyone having questions may call Judy McKenzie at 910-947-3139.

### **Culdee Knitters**

Submitted by Janie Taylor

Culdee Knitters is a group that began when a couple of teachers retired and needed a Monday-morning outing. It started with experienced knitters, enthusiastic beginners, and reluctant individuals who doubted their ability to create anything using "2 sticks and some string".



Since that time, the Knitters have made everything from dishcloths to sweaters, with lots of other items in-between. Donated items have ranged from dishcloths for new Habitat for Humanity houses to premie caps for premature babies born at First Health Hospital with dozens of children's sweaters sent to World Vision for distribution wherever they were needed.

New members (as well as observers) are always welcome! Culdee Knitters provide everything a beginner needs - from "2 sticks and some string " to enthusiastic encouragement for each project.

We currently are not meeting in person but hope to soon return to our Monday morning sessions. We'll hope to see some new faces.

**Again, if you have a skill or suggestion for another group, please share your ideas with several elders for Session consideration.** Maybe a Senior Lunch Bunch, Connections Group to check on those living alone, Basic Home Repair Training etc. Think & share, please.

\*\*\*\*\*



**February is Blanket Fund Month** here at Culdee. Church World Service Blankets (CWS Blankets) provide shelter, comfort, and protection to so many around the world. Historically, Culdee has been a big supporter of this effort.

This year everyone can donate a blanket(s) in honor of or in memory of a family member or friend, just like we do with our poinsettias at Christmas. You are asked to donate at least \$10 per blanket. You may place cash or checks made out to Culdee with “blankets” or “CWS” on the check’s memo line in the offering baskets on Sundays or mail or deliver them to the church. Be sure to include a list with your name and the names of the people you are honoring or memorializing with your gift. If you want to make a donation but not turn in a name(s), that will be fine, too. At the end of the month, the list of names and donors will be in the bulletin. Thank you so much for donating and praying for all who will receive the blankets. Submitted by June Stewart.

\*\*\*\*\*

### **Family Promise® of Moore County**

Culdee Presbyterian Church is a supporter of **Family Promise® of Moore County** (FPMC) and has been for many years. Initially the families in this program traveled from church to church, week to week, sleeping in the churches with overnight church hosts. Church members provided meals during the week and could help the children with homework and story-time in the evenings. Culdee hosted many families through the years. FPMC has grown and improved and churches, including Culdee, still support the effort but no longer host families at church facilities.



“Family Promise® of Moore County opened its doors to homeless families in January of 2000. For many years, FPMC followed the national model of using churches for overnight lodging, congregations for volunteers, social service agencies for referrals and an existing facility for a day center.

However, in 2016, Family Promise® of Moore County purchased a 3,500 square foot home located at 400 Saunders Boulevard in Aberdeen, NC. The home has five bedrooms and 6-1/2 bathrooms, kitchen, dining room, play room, den, laundry and a fenced in playground. It also has office space for staff and a clothing closet for residents.

The shelter is supported by volunteers from 15 area congregations and organizations. These volunteers perform a variety of duties including preparing an evening meal, spending time in fellowship with the families and spending the night, to ensure the comfort and safety of all.”

<http://fpofmc.org/about-fpmc/who-we-are/our-story.html>



The previous information from FPMC's website includes pre-COVID-19 procedures and once the danger has passed, will likely be reinstated. Since the pandemic began, Culdee and it's FPMC partner church, West End Presbyterian, work together to drop off evening meals during our assigned weeks but do not stay as overnight hosts. Hired assistants are staying overnight until health conditions make it possible for volunteers to return.

Volunteers from Culdee are still encouraged to participate by providing a meal, donating needed supplies for the house or its guests or by simply making a donation to support the program. Please call June Stewart if you would like to volunteer.

**Culdee's next Family Promise service week runs February 8-11.**

\*\*\*\*\*

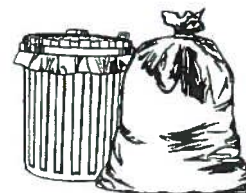


### **Seasonal Cemetery Clean-Up**

Spring is rapidly approaching and the **Cemetery Committee is respectfully requesting that you remove any winter and/or Christmas flowers and containers you wish to keep by the end of February.**

Beginning the week of March 15<sup>th</sup>, all remaining winter and/or Christmas flowers and severely faded or dead flowers will be removed from all graves by the Cemetery Committee.

**REMINDER: Any flowers deposited in the church trash cans need to be responsibly secured in trash bags before depositing in the cans.** Garbage service refuses to collect trash cans that contain loose debris as it blows out of their truck. Please be responsible and use a trash bag whenever you deposit trash in church cans.



\*\*\*\*\*



**Finance Ministry: Chairman Danny Aldridge & Vice Chair Diann Fortune**

**Proverbs 21:20** *In the house of the wise are stores of choice food & oil,  
but a foolish man devours all he has.*

### **Meeting Schedule:**

The Finance Ministry is still meeting in the Session Room following its regular schedule of the second Sunday of the month. Church members are welcome to attend.

### **Financial Status:**

Culdee continues to maintain financial stability, meaning current contributions are covering the expenses. There are sufficient funds for what Culdee needs but no extra has been available to add to savings. As yet, reserve funds remain untouched. Per advisement from the Presbytery, churches should maintain reserve funds at all times that would allow the church to cover necessary expenses and salaries for an extended period of time due to unforeseen

circumstances. Recommended is a year's worth of expenses. Culdee maintains six months of reserves meaning that funds equivalent to six months of budgeted expenses are restricted for that use. Money beyond the restricted six months is considered undesignated.

The end of the year investments statement from Eastman, Palmer, Davis and Vaughan Wealth Management Group-Stifel who handles Culdee's investments, reports that investments have displayed significant growth. Invested with them are 100% of the Sarah Ann Fortune Fund, 100% of the Parking Lot Funds and 25% of the Doris Moore Scholarship Fund, all legally restricted funds. One unrestricted CD was also invested with Eastman et al. because interest on CDs at the maturity date was less than 1%. Wisely investing funds for maximum growth is not only responsible, it allows Culdee to do more of God's work serving others and assists Culdee in reaching goals. The Session-approved Investments Policy and Procedures clearly outlines how funds will be invested in a manner that balances appropriate risk for each fund's purpose. Professional investors like Eastman, et al. oversee funds and markets daily and advise appropriate changes in a timely manner to potentially avoid lost opportunities.

Sandhills Accounting Services, who maintains Culdee's financial records, reported for year-end 2020, Culdee invested \$90,428.11 with Eastman et al. (The initial investment was \$5,254 in June 2020.) As of December 31, 2020, the value of the invested funds was \$98,526.66, reflecting a growth and interest of \$8,098.55 in six months. Investments include both legally restricted and unrestricted funds.

Sandhills Accounting Services also reported the funds deposited between the two banks Culdee currently uses, Truist Financial (BB&T) and Live Oak Bank, totaled \$212,207.93 as of December 31, 2020. This amount is comprised solely of Total Legally Restricted Funds. The Total Legally Restricted Funds consist of both CDs and savings accounts. Of the \$212,207.93, the growth and interest during the twelve months was \$3,684.30.

The Finance Ministry has recommended previously to invest funds not immediately needed for daily operation with Eastman et al. due to the growth and interest earned on currently invested funds. Eastman et al. uses the Culdee Investments Policy and Procedure to guide the investment of each fund based on the fund's purpose and goal. Culdee's Session determines whether or not to invest the money or leave it deposited.

#### **Basketball Court and Christian Life Center:**

On a different vein, revisited was an idea from roughly eight years ago which is the building of a Christian Life Center across the street from the sanctuary on the church's four-acre tract of land. LEGACY Youth have a desire for a basketball court, a project with which Finance concurs as it offers fellowship and an enticement for young people to fellowship and participate within church. The youth have worked hard to develop a plan using a small area behind the church which was the only space they saw available. They were unaware of the four-acre tract of land adjacent to the right side of the manse. Those four acres would offer plenty of space for a building and parking for events in a multifunctional building.

Culdee has the facilities it has by dreaming big and working together to accomplish a goal. There is an opportunity for that now with a Christian Life Center. Building plans were drafted by Tim Howle when this idea

originated and those plans could be used as a basis now. *The Christian Life Center could be built in stages, beginning with a basketball court, and as funds are raised, the building could be built around the court later.* The youth would eventually have an indoor court for year-round comfort and other amenities made available in the building. The advantages, drawbacks and costs of each location should be carefully considered before investing the amount of money required. The decision should be one that would benefit God's work at Culdee now and in the future.

Finance Ministry will recommend to the Session at the February meeting to pause the plans and work on the current basketball court in order to investigate the feasibility of building a multifunctional Christian Life Center in phases beginning with a basketball court as Phase I. If the Session agrees to consider the Finance recommendation of another option to the original basketball court, the combination of the youth's work with the existing building plans should give the investigation of feasibility and congregational support a head start.

Since financial support and physical labor will be needed from the Culdee family for either path, certainly the Session will solicit input from the congregation. Please be thinking on this. The newsletter will continue to provide information as Culdee moves forward with determining which route would be most beneficial for Culdee's future.

#### **Lightning Strike & Insurance Update:**

Finance Ministry continues to meet with the insurance adjustor and contractors to get issues resolved. The church has received the insurance reimbursement for the initial items replaced like computers and telephones. The sound system damage was discovered much later and is still a work in progress. Unfortunately, some initial repairs/replacements must be made before the full extent of the damage can be diagnosed. That first step is close to being resolved so we can move forward. There are a couple of more issues that have been identified recently that might be attributed to the lightning strike but need further investigation before that can be determined.

#### **Spring Spruce-Up:**

You will soon begin noticing some changes around the manse and church facilities. Buildings & Grounds and Finance are working together to get some repairs and updates made. Many folks have already volunteered their services or made donations towards repair and beautification. If you feel moved to make a contribution, Tim Bailey is focusing mainly on the interior of the buildings and Diann Fortune is coordinating much of the exterior work with the assistance of volunteers. More volunteers may be needed for some yard care later and if so, a plea will be sent out via One Call at a later date. Many thanks to all who have already been involved and to those that help in the future!

#### **Appreciation:**

The continued support of the Culdee Family is appreciated. Culdee is able to continue to provide worship opportunities and maintain the facilities built for the glory of God to do His work due to you. Thank you!

\*\*\*\*\*

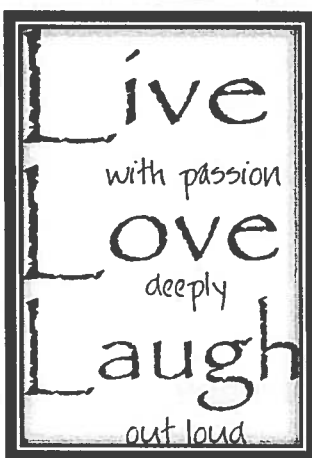
### **Belated Birthdays for January: Our apologies!**

Virginia Elder	04	Catherine Sears	14	Caleb Marion	22
Cody Thompson	05	Clara Bailey	16	Domonic Campbell	25
James McKenzie	08	Jason Cole	17	Derek Stewart	26
Tony Cox	09	John Blue	18	Breese Lilly	26
Josh Halverstadt	12	Randy Cox	18	Matthew Clayton	29
Lisa Patterson	13	Tyler Prince	20		
Dianne Van Winkle	14	Phillip Marion	21		



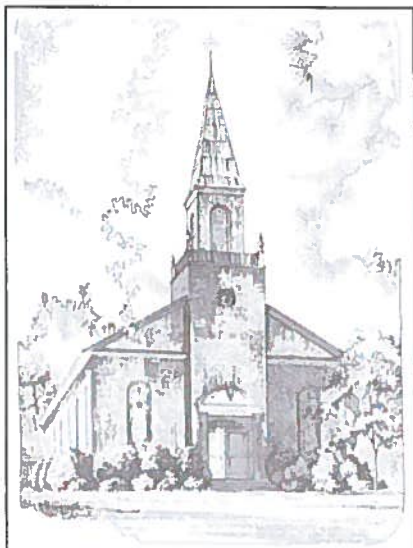
### **Birthdays for February:**

Pryor (Jr.) Moon	03	Gavin Washington	12	Daniel Jackson	20
Jonathan Aldridge	06	Betty Black	12	Emma Ferguson	21
Patrick Howle	07	Chasity McKenzie	15	Bryan Fields	24
Danny Aldridge	08	Linda Bryson	17	Madison Adams	25
Kristen B. Harrill	08	Taylor Ferguson	17	Forrest Cox	25
Pete Bullard	08	Sylvia Pusser	17	Diann Fortune	25
Alex Patterson	11	Martha Mathews	19	Austin Aponte	27
Carolyn Lea	12	Brynley Marino	19	Sarah Cox	28
Rhonda Shields	12	Don Williamson	20	Kathleen Black	29
Cathy Marion	12	Brooke Kemp	20		



1 Corinthians 16:14 Let all that you do be done in love.

If there is additional information you would like to see included in our newsletter, please email [culdee.news@gmail.com](mailto:culdee.news@gmail.com) to make suggestions or requests. All ideas will be given consideration. 😊



***Give thanks to the LORD, call on his name;  
make known among the nations what he has done.  
1 Chronicles 16:8***

### **Culdee Presbyterian Mission**

Culdee Presbyterian Church will build caring relationships with our local and global community while proclaiming the Word of God and building up our faith community.

### **Weekly Worship Services**

#### **Sunday Offerings:**

Online Service-At your convenience.

Drive-In Service- 10:00 a.m.

#### **Wednesday Evening:**

Brief weekly devotion and prayer



**Contact Us:** PH: (910) 295-6685 [www.culdeechurch.net](http://www.culdeechurch.net) [culdeepresbyterian@gmail.com](mailto:culdeepresbyterian@gmail.com)

[Clipart from Clipart-Library.com](http://Clipart from Clipart-Library.com)